



SCHNELL INDUSTRIES
Inc.



One thing is clear:

We live at a time where the future is within our grasp. The world has become smaller and drastic global changes have become evident. When meteorologists talk about climate change, demographers predict a significant increase in the world's population, when economists fear world-wide crises and epidemiologists are concerned about pandemics, they are talking about the next twenty to fifty years – the lifetime of the next generation.

Reason enough to work intensively on solutions to the problems ahead.

But not all is lost; positive developments are presently taking place.

Basic research is working on solutions. New technologies for alternative energy are being developed;

hybrid and electric cars are being built and totally new approaches and new ways of thinking have emerged.

When the question arises “who is thinking about tomorrow” Schnell Industries has worked hard to do its part in solving some of the problems that the future has in store for us.

We humans should not face the future without taking action to improve and positively influence the conditions on mother earth.

Our decisions today form the base for the next centuries on earth 3.0.

member of
ERDE 3.0



Welcome

To have a good idea is one thing - to realize it quite another.

A successful completion of any task requires uncompromising effort and commitment to perfection, up to the last detail.

This is especially critical when building mid-wave flash dryers.

The most important ingredient for the production of conveyer dryers of the Rutcure Master Serie is time.

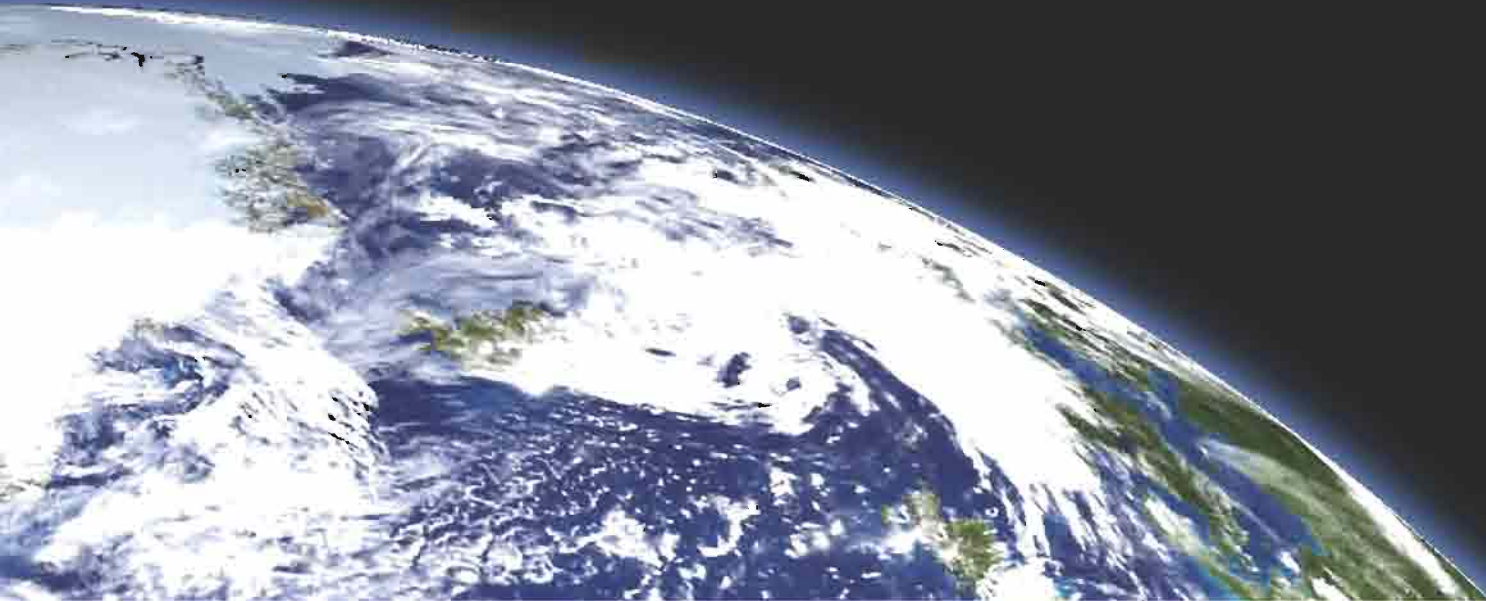
Only through painstaking initial planning and meticulous execution during the production process can something exceptional be created - an end product tailored to your individual needs.

Since 1995 the name Schnell has been known for meeting the highest standards of quality.

Day after day our products and machines, as unique as our customers, prove themselves in more than 22 countries.

Your satisfaction is our first priority.

Rainer Schnell



Flash Dryer

The Slimline Pro is Schnell Industry's newest and most innovative flash dryer with easy operation and high drying capacity at a surprisingly low price. The Slimline Pro is universally adaptable, suitable not only for automatic presses but also manual ones.

The dryer is equipped with an infinitely variable mid-wave infrared pulse control in the stand by mode, allowing the pulse control to be set at 0% when printing sensitive materials.

At this setting the dryer does not radiate heat during intervals in the printing process and consequently will not damage the material.

The air-flow regulator with settings of 50% and 100% saves up to 20 % energy, since at 50% airflow the heat remains in the dryer's heat chamber. At the start of the next printing cycle this heat is released with 100% airflow.

For detail technical data visit our website: www.schnell-industries.com



Integrated Flash Dryers

In the past the choice of flash dryers to complement MHM presses was very limited. As we all know, without competition, the price for any piece of equipment is often higher than it need to be. With the introduction of Schnell Industry's remote controlled integrated flash dryers in 2005, which are suitable for most MHM presses, the competitive landscape has drastically changed. In spite of our relatively late entry into the market, we could offer our customers dryers with features never seen before:

2005: the first in series manufactured aluminum digital flash dryer with a 50% weight reduction for easier retooling.

2007: the first in series manufactured aluminum digital flash dryer with IR sensors for temperature measurement in real time.

2008: the first in series manufactured aluminum digital flash dryer for plastisol transfers with 3 independent IR measuring zones in real time.

You can expect the best for your presses!

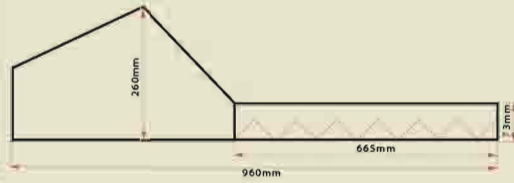
Schnell Industry's dryers – always your first choice!



Slimline 960

midwave flash cure unit

Technical Data



output power
rated input voltage
power consumption
automatic timer
stand by automatic
automatic power
control

12,2 kW
380V/50/60Hz
17,7 A
0-20 sec
0-50 %
0-100 % performance
MHM compatible

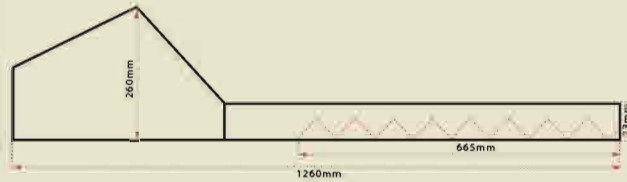
drying surface
emitters
fans
fuses
dimensions
heating surface
weight without frame

690mm x 500mm
quartz tube emitters
2x 230 V/50/60Hz/0,14 A
3x20 A
960 x 500 x 260mm
680 x 500 x 73mm
12,4 kg

Slimline 1260

midwave flash cure unit

Technical Data



output power
rated input voltage
power consumption
automatic timer
stand by automatic
automatic power
control

12,2 kW
380V/50/60Hz
17,7 A
0-20 sec
0-50 %
0-100 % performance
MHM kompatibel

drying surface
emitters
fans
fuses
dimensions
heating surface
weight without frame

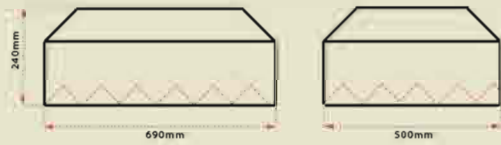
690 x 500 mm
quartz tube emitters
2x 230 V/50/60Hz/0,14 A
3x20 A
1260 x 500 x 260 mm
680 x 500 x 73mm
12,9 kg



S-Type Flash IR Control

midwave flash cure unit

Technical Data

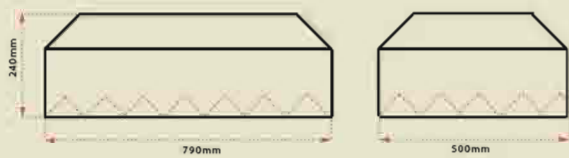


output power	12,2 kW	setpoint	50... +200°C
rated input voltage	380V/50/60Hz	shutdown threshold	235°C
power consumption per phase	17,7 A	system integration	MHM camptible internal/external
control	Pulse width modulator	drying surface	640 x 460mm
automatic timer	0-20 sec	emitters	quartz tube emitters
stand by automatic	0-50%	fan monitoring	optional
power system "manually"	0 – 100% performance	temperature monitoring	optional
temperature control	integr. PID-controller	fuses	3x20A sluggish
thermometer measuring range	0..... +250°C	dimensions	690 x 500 x 240mm
actual value	0..... +250°C	weight	15,5 kg

S-Type Flash XLong

midwave flash cure unit

Technical Data



output power	15 kW	drying surface	740 x 460mm
rated input voltage	380V/50/60Hz	emitters	quartz tube emitters
power consumption per phase	21,4 A	fans	3x 12V-225m / h
automatic timer	0 – 20sec	fan monitoring	optional
stand by automatic	0 – 50 % performance	temperature monitoring	optional
automatic power	0-100 % performance	fuses	32A
control MHM compatible	automatic/sensor	dimensions	790 x 500 x 240mm
PC data acquisition	optional	weight	17 kg



Conveyer Dryers

The Schnell Industry Master Series models, built for use with both automatic and manual presses, are well suited for drying plastisol inks and transfers.

The models in this line include mid-wave infrared emitters of the highest quality coupled with an infinitely variable, calibrated fuzzy-logic-control, which monitors the temperatures in intervals of milliseconds and automatically regulates the energy requirements.

Both our Master M18 and M22 with 2 and 3 heat chambers respectively can be expanded up to 4 heat chambers total. Both models are equipped with the electronics necessary to drive any added drying element.

Thanks to our modern construction and our innovative double chamber system the Schnell Industry Master Series is energy efficient and provides consistent drying power.

All dryers in the Master Series boast an infinitely variable exhaust and circulating air regulator.



IQ-Stopp

High energy consumption is a costly result of using dryers in the textile printing industry. Traditional dryer technology can increase the cost of printing textiles several thousand dollars a year.

The IQ Stopp allows the dryer to recognize all pauses in the printing process. The dryer then switches automatically to stand-by mode. The operator controls the temperature in the heating chamber during stand-by mode. Thus the customer can determine how much energy is being saved.

Please read more about IQ-Stopp at: http://www.schnell-industries.com/iq_stop.html



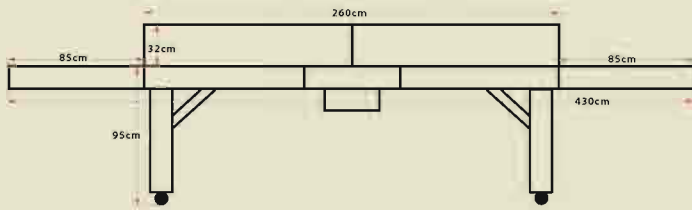
M18

conveyor dryer

Technical data

drying capacity 700 pcs/h
 temperature control range 50° - 200°C
 heating chamber 115 x 260cm
 belt width 105 cm
 total length 430 cm
 total width 130 cm
 total height with rolls 128 cm

heating zones 2 (Main/Flash)
 power 18kW
 power at 160°C 10,8kW
 rated input voltage 380V/50/60Hz
 power consumption 26,4A/per phase
 quartz tube emitters 230V/750W
 numbers of emitters 24



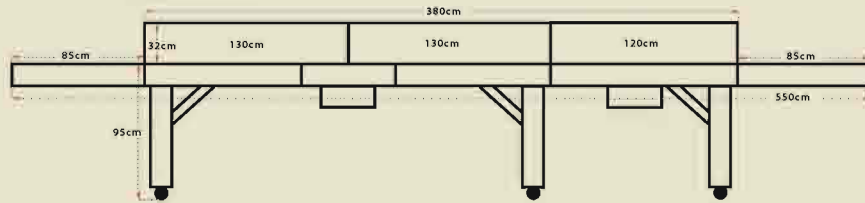
M22

conveyor dryer

Technical data

drying capacity 900 pcs/h
 temperature control range 50° - 200°C
 heating chamber 115 x 380 cm
 belt width 105 cm
 total length 550 cm
 total width 130 cm
 total height with rolls 128 cm

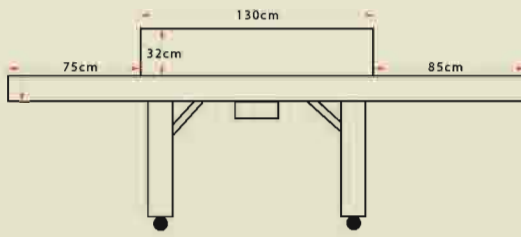
heating zones 2 (Main/Flash)
 power 22kW
 power at 160°C 13,2kW
 rated input voltage 380V/50/60Hz
 power consumption 29,5A/per phase
 quartz tube emitters 230V/750W
 number of emitters 27



M9

conveyor dryer

Technical data

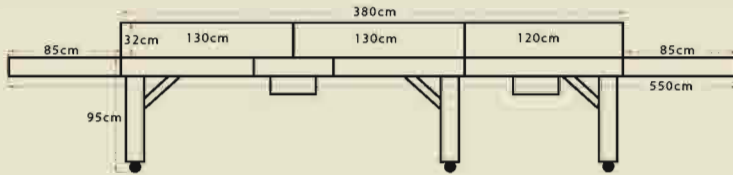


drying capacity	300 pcs/h	heating zones	2 (Main/Flash)
temperature control range	50° - 200°C	power	9kW
heating chamber	85 x 120 cm	power at 160°C	5,4kW
belt width	70 cm	rated input voltage	380V/50/60Hz
total length	290 cm	power consumption	13,4A/per phase
total width	100 cm	quartz tube emitters	230V/750W
total height with rolls	128 cm	number of emitters	12

M22 XL

with 140cm belt width
conveyor dryer

Technical data



drying capacity	1200 pcs/h	heating zones	2 (Main/Flash)
temperature control range	50° - 200°C	power	22kW
heating chamber	165 x 380cm	power at 160°C	16,2kW
belt width	150cm	rated input voltage	380V/50/60Hz
total length	550cm	power consumption	29,5A/per phase
total width	175cm	quartz tube emitters	230V/750W
total height with rolls	128cm	number of emitters	27





Schnell Industries
Tel.: 0049-33922-90085; Fax: 0049-33922-90086
sales@schnell-industries.com • www.schnell-industries.com